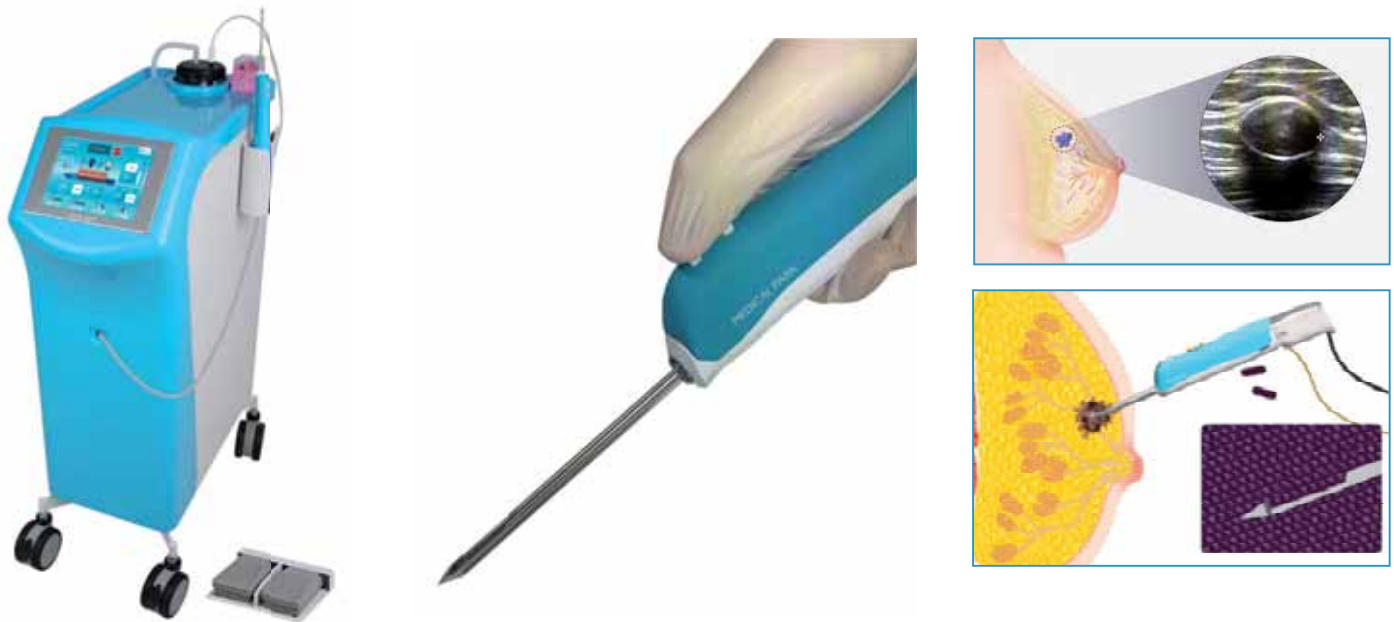
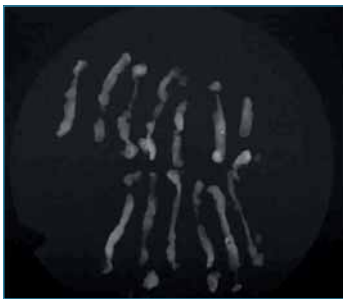


Vacuum Assisted Ultrasound Guided Breast Biopsy System



- Developed to overcome the weaknesses with complete biopsies
- Large amounts of samples can be obtained through a single insertion, thus allowing for a more accurate diagnosis
- Evaluated in clinical trials as a therapeutic tool, with an expanding role in the surgical treatment for excision of benign breast lesions such as fibroadenomas, nipple discharge, abscesses, and gynaecomastia
- An intuitive interface provides the operator easy control
- The aspirated tissue is automatically discharged by vacuum suction
- The inner blade has 4 step adjustments - 5mm ,10mm ,15mm, and 20mm



X-Ray



Ultrasound

BEXCORE SYSTEM

System body - Driver - Foot switch - Suction bottle

CODE

BXS100

BEXCORE PROBE

CODE	SIZE
BXC145	8Gx109mm
BXC140	10Gx109mm

BEXCORE TISSUE MARKER

CODE	SIZE	MARKER
040239	363,7mm	2x4 mm